

## **PCANZ Summer School 2023**

### **9th - 13th January 2023**

Epsom Girls Grammar School  
14 Silver Road, Epsom, Auckland 1023, [www.eggs.school.nz](http://www.eggs.school.nz)

Workshops: Monday 9<sup>th</sup>, Tuesday 10<sup>th</sup>, Thursday 12<sup>th</sup> January from 9.00am – 4.30pm;  
Friday 13<sup>th</sup> January 8.30am – 4.00pm

The workshops will start on Monday and Tuesday with a free day on Wednesday to explore the galleries, sight see, etc. Workshops will continue on Thursday and Friday.

There are 6 options to choose from offering a stimulating, varied programme and an exciting week of printmaking.

#### **4 day course: \$350.00**

##### **1. Carole Shephard : Articulating Practice - a Master Class**

**Monday 9<sup>th</sup> to Friday 13<sup>th</sup> January (there will be a free day on the Wednesday):**

**THIS WORKSHOP IS FULL, PLEASE PUT YOUR NAME ON THE WAITING LIST**



Dr Carole Shephard is a retired Professor of Fine Arts from the University of Auckland and holder of ONZM for her contribution to the visual arts. Carole is an artist, educator and writer living and working in Kawhia where she runs Te Puti Art Studio. Best known for her printmaking, her work is held in national and international collections and she is presently exhibiting in Auckland and Melbourne. Carole will be next year's judge for the newly reconfigured NZPPA for which PCANZ is a major sponsor.

This workshop is aimed at experienced printmakers wishing to either create a new body of work, or make a change of direction.

Conversations regarding appropriate print techniques for individual ideas, the challenges of scale and installation as an art form and information gathering will take place. It will include drawing and compositional challenges along with group discussions, one-to-one dialogue and motivational activities related to each individual's specific theme. Do not expect to produce finished work during the period but fresh ideas (and approaches) pinned down and ready to process in your own studio.

---

#### **All two day courses: \$175.00**

**As there are limited spaces available in the following workshops it is recommended to register promptly.**

##### **2. Lorna Crane Australian Artist, based in Pambula : Gelliprinting – Momigamo and Bookbinding Workshop :**

**Monday 9<sup>th</sup> & Tuesday 10<sup>th</sup> January:**

**WORKSHOP REPEATED Thursday 12<sup>th</sup> & Friday 13<sup>th</sup> January:**

My approach as a professional artist is process based, experimental and exploratory. Where the search for that sense of uniqueness over the past 40 years is an essential part in my investigations as a painter, printmaker and fibre artist. Since moving to the far south coast of NSW Australia 19 years ago my studio practice has given me the opportunity to delve deeper into my work. During this time my work has been about the landscape of time and place. To me the places I inhabit are an essential part of the process where that sense of memory echoes throughout my work. My works speak about moments of time where repeat motifs are formed in an experiential and gestural manner.

Please join me in an exciting 2 days of an experimental workshop exploring gelliprinting on paper and cloth. Then later experience the wonderful art of momigami using plant based oils with a variety of papers with the intention to make a unique paper and a cloth sample book.

This workshop will be a great opportunity for me to share some of my simple steps to create interesting paper and cloth pieces as monotypes using a variety of mediums including acrylic pouring paint and oxide dye sprays.



### 3. Steve Lovett : Drawing and paper lithograph:

Monday 9<sup>th</sup> & Tuesday 10<sup>th</sup> January



Steve Lovett is an artist and educator working in print education and research at Elam, University of Auckland.

The workshop will introduce participants to this easy to learn lithographic process that works from paper plates.

The workshop will cover working with photographic imagery and hand-drawn imagery.

Day one will cover the foundations of the process from image preparation, understanding tonal values that will print successfully, ink management, printing and registration strategies. For those interested the day will also include an introduction to relevant functions in Adobe Photoshop that will assist with pre-print image preparation.

Day two will be the opportunity for participants to extend and think through this process knowledge, developing methods to problem solve, develop and resolve at least two potentially multi-colour images.

The workshop will be supported with process notes, materials and supplier lists.

### 4. Toni Hartill : Unfolding Ideas- Taking print to the 3 dimension and Beyond

Monday 9<sup>th</sup> Tuesday 10<sup>th</sup> January:

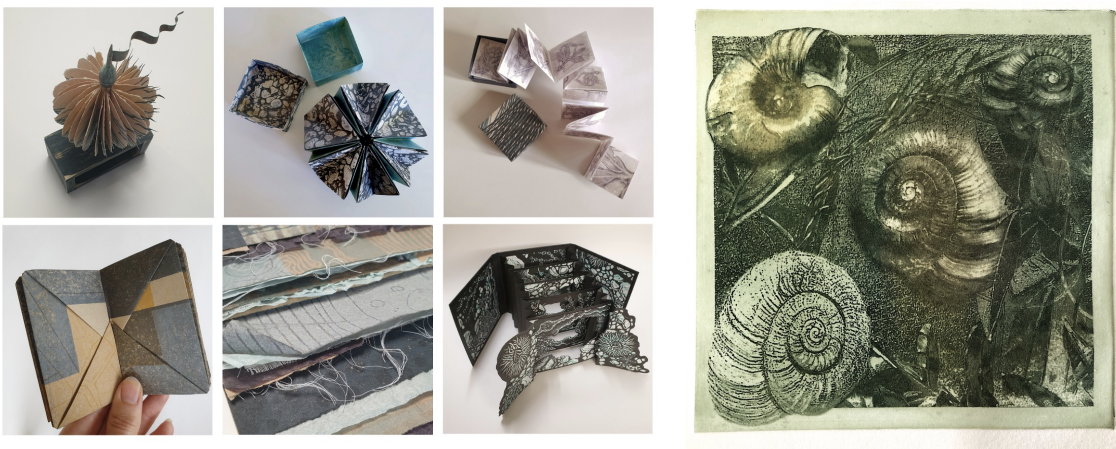
Toni is a graduate from Auckland's Elam School of Fine Arts. An experienced teacher, her work is strongly influenced by colour, pattern, texture and form in the natural environment, in particular coastal and oceanic themes.

During this 2 day workshop you will be introduced a variety of simple through to more complex paper structures and ways that these could be used to express your own ideas and concepts in tactile, 3 dimensional formats using reject and/or surplus prints, papers, ephemera and miscellaneous found materials and/or objects.

This workshop will initially be focused on creating your own collection of models of a variety of structures as a stepping stone for future developments. Depending on the skill level and experience of the participants we will select which structures we focus on and how complex we go!

There will also be the opportunity to print new papers, using your own existing plates, or newly created textured lino plates. You will then develop one or more ideas of your choosing, to begin working towards your own artist's books, assemblages or sculptural pieces.

Come with an open mind, ready for free play and experimentation. Be prepared to try something new, to go in directions you never considered. Engage your "out of the box" thinking and surprise yourself with what you come up with. Suitable for all levels of experience.



## 5. Shelley Ryde : Solar Plate

Thursday 12<sup>th</sup> – Friday 13<sup>th</sup> January

Shelley is a highly experienced educator and artist who explores the use of available technologies including the photocopier to translate ideas into print.

This course is in response to frequently asked questions about solarplate.

How do I use that stuff?

There must be a manual –right?

And how do I find out how to make the artwork for it?

Hopefully this workshop will answer some of the questions you have wanted to know about some of the new print techniques available, particularly solarplate (photopolymer etching).

I take a drawing approach to using solarplate, mostly because it has unique characteristics that need to be understood. Solarplate is about tone, not contrasts.

It is photographic and unlike other print processes, black is not necessarily the holy grail with this medium. In fact a dense black on the artwork will wash right out of the plate down to the metal and if that is what you want you can use this process to make a relief plate.

It is understanding the possibilities that make this process so unique.

So come along and I will give you some answers based on a deep philosophic approach that begins with:

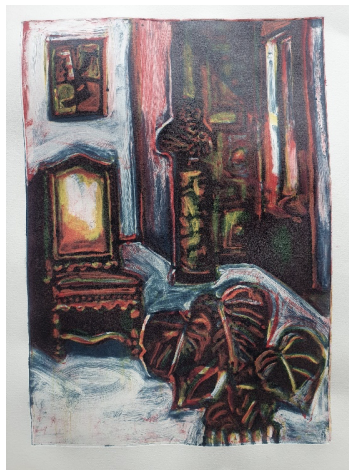
Now What Will Happen If....?



## 6. Cate Godwin : From Collage to Monoprint and Back :

Thursday 12<sup>th</sup> Friday 13<sup>th</sup> January

This course is for anyone interested in exploring the art of monoprint as a beginner or in greater depth. Participants will use still life content to explore, single colour and reduction colour monoprinting. They will create collages as a means to explore composition and generate content and extend their monoprints.



---

### Summer School 2023

#### Epsom Girls Grammar School Hostel : Accommodation and meals

14 Silver Rd, Epsom, Auckland 1023, New Zealand, [www.eggs.school.nz](http://www.eggs.school.nz)

The accommodation and meals are also on site in the Epsom Girls Grammar Hostel from Sunday 8<sup>th</sup> - Friday 13<sup>th</sup> January 2023.

The booking covers 5 nights, 5 breakfasts, 4 lunches and 4 dinners. All inclusive cost \$691

Sunday 8<sup>th</sup> bed only

Monday 9<sup>th</sup> bed with breakfast, cut lunch and buffet dinner

Tuesday 10<sup>th</sup> bed with breakfast, cut lunch and buffet dinner

Wednesday 11<sup>th</sup> bed with breakfast and buffet dinner (note: no cut lunch for day out)

Thursday 12<sup>th</sup> bed with breakfast, cut lunch and buffet dinner

Friday 13<sup>th</sup> with breakfast and cut lunch

The rooms are in the Kauri Dormitory with access to the dormitory lounge/kitchenette, upstairs and downstairs showers & lavatories.

There will be access to the internet, the lounge and dining hall throughout the days and evenings.

Parking: We will be given access to the parking area at Gate 4, Owens Road from Sunday 8<sup>th</sup> afternoon - Friday 13<sup>th</sup>. Alternatively, please park off site in Albury Ave, Sharpe Rd and Owens Rd or utilise public transport.

Bookings via the form at [www.printcouncil.nz/summer-school-2023](http://www.printcouncil.nz/summer-school-2023)